



GMT MONTHLY MEMBERSHIP PROGRESS REPORT

Results as of: 4/30/2025

Multiple District 13

LOCATION: OHIO

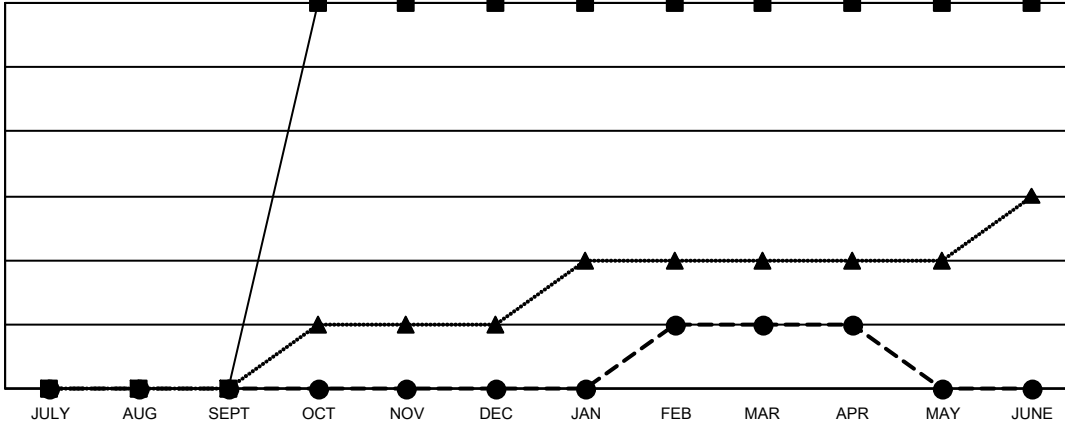
GMT: OPEN

GMT CA 1

Clubs			
RESULTS FOR 2024-2025			
QUARTER	NEW CLUB GOAL	NEW CLUBS	DROPPED CLUBS
JULY/AUG/SEPT	0	0	3
OCT/NOV/DEC	6	0	4
JAN/FEB/MAR	0	1	1
APR/MAY/JUNE	0	0	0

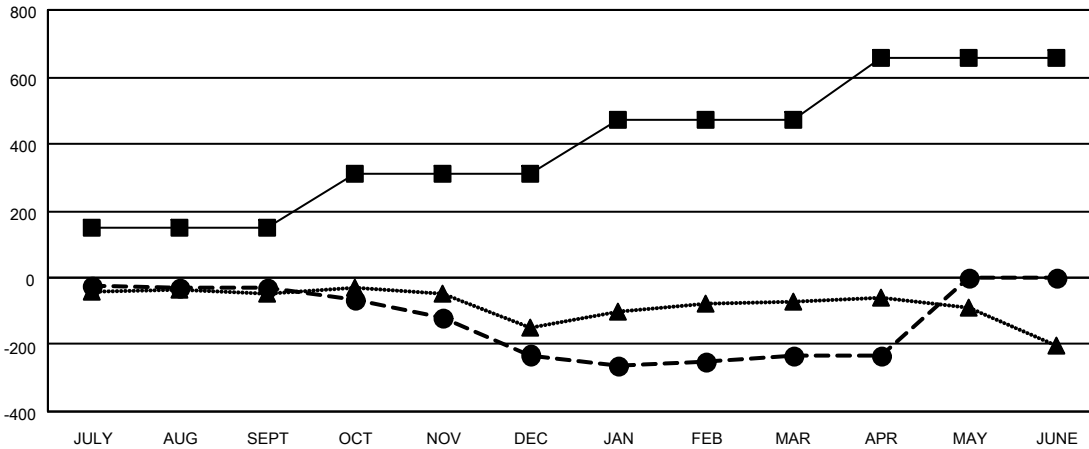
Members			
RESULTS FOR 2024-2025			
QUARTER	MEMBER GROWTH NET GOAL	MEMBER GROWTH ACTUAL	DROPPED MEMBERS ACTUAL (including transfers)
JULY/AUG/SEPT	150	205	214
OCT/NOV/DEC	162	194	363
JAN/FEB/MAR	160	223	209
APR/MAY/JUNE	184	59	54

GOALS AND ACTUAL NEW CLUBS CUMULATIVE



- - CURRENT YEAR GOALS FOR NEW CLUBS
- - CURRENT YEAR ACTUAL NEW CLUBS
- ▲ - LAST YEAR ACTUAL NEW CLUBS

GOALS AND ACTUAL MEMBERS CUMULATIVE



- - MEMBER GROWTH NET GOAL
- - MEMBER GROWTH ACTUAL
- ▲ - LAST YEAR MEMBERSHIP ACTUAL

DROPPED CLUBS: 8	
DROPPED MEMBERS	
DECEASED	128
CLUB CANCELLED	21
OTHER	687
TOTAL	836

178 CLUBS OF 355 ADDED 1 OR MORE NEW MEMBERS

GENDER DISTRIBUTION	
MALE	6,350 (67.37%)
FEMALE	3,076 (32.63%)

[CLICK HERE FOR CUMULATIVE MEMBERSHIP DATA](#)

TOTAL FAMILY UNIT MEMBERS	0
FAMILY MEMBERS PAYING HALF DUES	0